



184 Homestead Way, New Addington, CR0 0DW

£2,000 Per Month



3



1



1



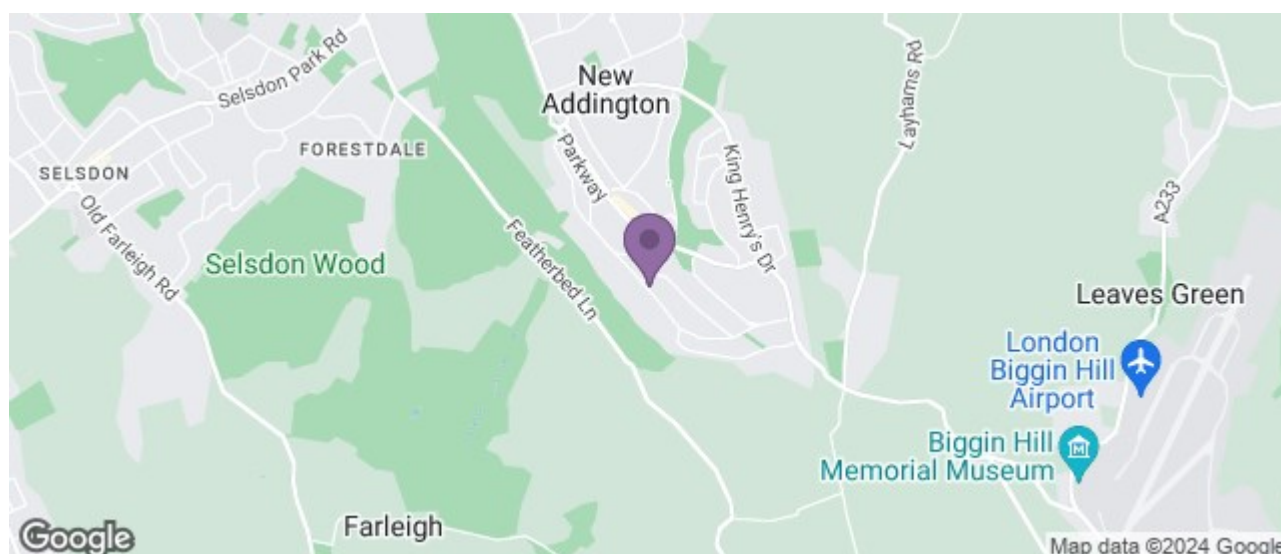
- Available now
- Appliances included
- Off street parking
- Great transport links
- Three bedrooms

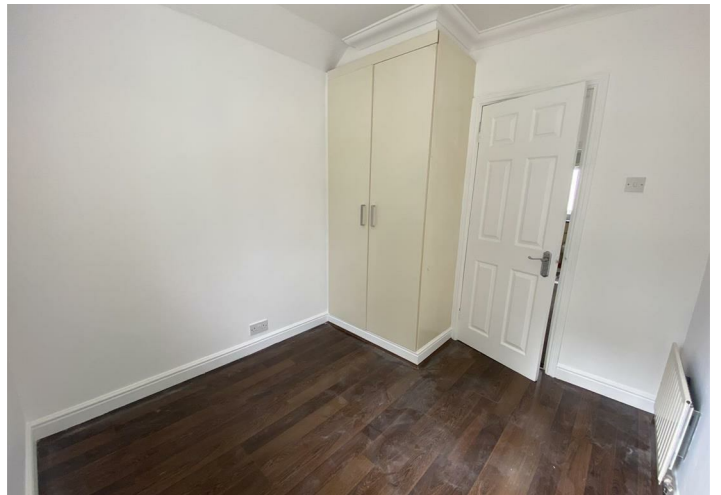


184 Homestead Way, New Addington, CR0 0DW

Paul Meakin are delighted to welcome to the rental market this three bedroom semi detached family house offered unfurnished for a twelve month renewable let subject to satisfactory references. The accommodation offers a lounge with doors through to a large kitchen diner with appliances, two double bedrooms and one single bedroom all with fitted wardrobes and a family bathroom with separate bath and shower. Rear garden with patio area and three sheds for storage and a large driveway to the front of the property. The property is situated within walking distance to Central parade with its numerous shops, leisure centre and tramlink with connections to East Croydon and Wimbledon.

Croydon Council band C. EPC D







These particulars, whilst believed to be accurate are set out as a general outline only for guidance and do not constitute any part of an offer or contract. Intending purchasers should not rely on them as statements of representation of fact, but must satisfy themselves by inspection or otherwise as to their accuracy. No person in this firm's employment has the authority to make or give any representation or warranty in respect of the property.

13 Limpsfield Road, Sanderstead, Surrey, CR2 9LA
Tel: 020 8657 8000 Email: letting@paulmeakin.co.uk <https://www.paulmeakin.co.uk>